



Show Off Your Dolphins

is the topic of our *stretch out* discussion on

Thursday, January 8, 2026

at 8 pm Eastern, 7 Central, 6 Mountain & 5 Pacific Time.

Fenton made dolphin pieces in different shapes, sizes and colors. We'll be amazed at the variety we see. You're also welcome to share new finds or pieces you'd like identified.

Information is available on our website, stretchglassociety.org and by request email to: info@stretchglassociety.org



Dolphin Bowls

The Fenton Art Glass Company made all the dolphin (often called diving dolphins by collectors) stretch glass pieces. In their original production, they used one bowl mold that had three dolphins around the edge (#1504A). These bowls could be shaped in several standard forms (flared, crimped, cupped, rolled rim, low or ice cream). A few rare bowls were made using a diamond optic plunger (#1502A).



Rose Bowl, Vella Rose



Wide Flared Bowl, Amber (very rare color)



Crimped Bowl, Aquamarine



Low Bowl, Vella Rose



Rolled Rim Bowl, Vella Rose (rare shape)



Flared Bowl, Diamond Optic, Florentine Green

Dolphin Comports

Fenton used three different molds to make dolphin comports. The two smaller ones, 1532A and 1533A, when left “normal” could be used to make candy jars using the #8 and #9 candy jar lids. The two small comports were usually shaped into one of three forms – flared (round), oval, and square. Both were also squeezed together to make fan vases. A diamond optic plunger was also used to make these pieces, but stretch examples are fairly rare.



Round, Tangerine



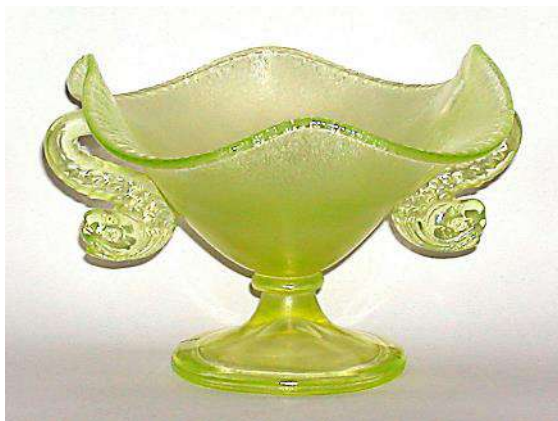
Round, Diamond Optic, Florentine Green



Oval, Velva Rose



Oval, Aquamarine



Square, Topaz



Square, Ruby



Round, Celeste Blue (difficult color)



Card Tray, Diamond Optic, Velva Rose (rare shape)

Both the 1532A and 1533A comports were made into fan vases. Diamond optic forms (#1502) are also known but uncommon.



#1533A (left) and #1532A (right) fan vases, Velva Rose



Fan Vase, Diamond Optic, Velva Rose



Fan Vase, Factory Decoration, Florentine Green



#1532A (left) and #1533A (right) Candy Jars, Aquamarine

A single mold was used to make a large comport form. These were shaped into six different forms: #1600 – rolled rim, #1601 – wide flared, #1602 – 8-crempled, #1603 – square, #1604 – oval, and #1608 – two-sides out (helmet shape). Velva Rose, Florentine Green and Aquamarine are the most common colors, but Wistaria pieces are known.



#1600 Rolled Rim Comport, Velva Rose



#1601 Wide Flared Comport, Aquamarine



#1602 Crimped Comport, Wistaria



#1603 Square Comport, Velva Rose



#1604 Oval Comport, Florentine Green



#1608 2-side out Comport, Aquamarine

Dolphin Servers

Fenton made two handled servers that used the dolphin as a handle, a sandwich tray and a butterball tray (#1557). The larger trays are most common with a diamond optic pattern(#1502) while the butterball trays are plain.



Sandwich Tray, Diamond Optic, Aquamarine



Butterball, Celeste Blue



Sandwich Tray, Diamond Optic, Florentine Green



Butterball, Velva Rose



Sandwich Tray (plain), Velva Rose

Dolphin Candy Jars

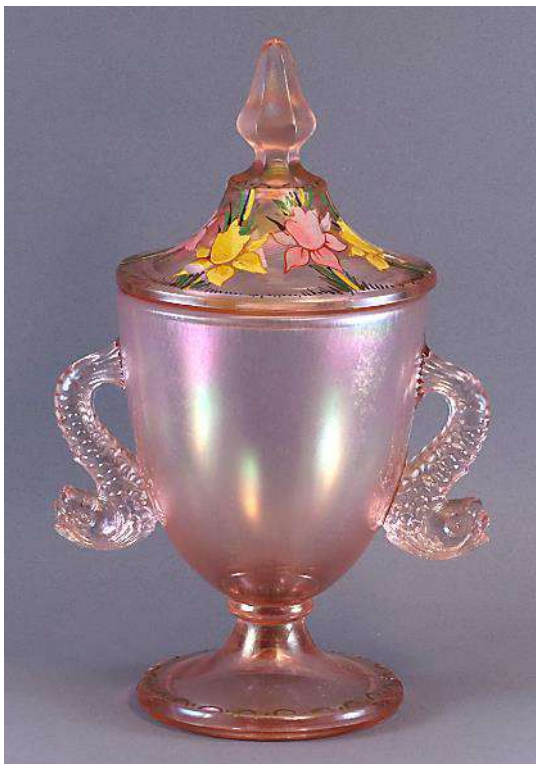
Again, Fenton used the #1532A and the #1533A molds to make two sizes of candy jars. When Fenton remade stretch glass in 1980, they retooled the foot of the #1533A mold so that the foot was thinner and had no inside rim.



#1532A Candy Jar, Florentine Green



#1533A Candy Jar, Celeste Blue



#1533A Candy Jar, Decorated, Velva Rose



#7580 Candy Jar, Velva Rose (1980)

Other Dolphin Items

Additional dolphin items include small candleholders (#1523) that are most common in Velva Rose, Florentine Green and Aquamarine. Wistaria and Topaz examples are also known.



#1523 Candleholders, Aquamarine



#1523 Candleholders, Wistaria (rare color)



#1523 Candleholders, Florentine Green

Dolphin stemmed nut cups (#1533) are quite rare in any color, but they are known in Celeste Blue, Florentine Green and Velva Rose.



#1533 Nut Cups, Celeste Blue, Florentine Green, Velva Rose

Other Dolphin Items

Small two dolphin-handled bowls (#1621) are well known in the dolphin line, but very few were given the stretch treatment.



#1521 Bowl Square, Florentine Green



#1521 Bowl, Oval, Velva Rose

Late Production Dolphin Items

As stated earlier, Fenton retooled the #1533A mold by replacing the thick foot with a thin version. They actually had two of these molds and they made numerous items in stretch from 1980 until they closed in 2011.



Candy Jar, Velva Rose (1980-82)



Fan Vase, Levay Purple (1981)

Square Comport, Cobalt Blue (SGS 1996)



Round Comport, Black Stretch (SGS 1997)

From 1980 through 2011, Fenton used many base glass colors to make the double-dolphin comports and vases.



Oval Comport, Aqua Opal (SGS 2001)



Square Comport, Ruby Amberina, (2004-2005)



Oval Comport, Coraline, (whimsey, SGS 2001)



Fan Vase, Ocean Blue Decorated (1994)



Fan Vase, Ruby (SGS 1994)

In 1994, Fenton produced a new triple-dolphin bowl mold (#2759) and made crimped bowls in Dusty Rose Stretch. The dolphins are smaller than the original three-dolphin bowls and they have less detail. A few experimental bowls in Stiegel Green are known.

