

STRETCH OUT DISCUSSION

Marigold / Grecian Gold / Gold Stretch Glass

Displayed at our Golden Anniversary Convention
Will be the topic of our *stretch out* discussion on

Thursday, September 12, 2024

at 8 pm Eastern, 7 Central, 6 Mountain & 5 Pacific Time.

All are welcome to join this Zoom meeting.

You'll see the golden highlights of our convention display,
And are welcome to share your own golden treasurers.

Photos of the glass will be available on our website website,
stretchglassociety.org one week preceding the call.

Further information is available on our email: info@stretchglassociety.org



The Club Display

A panorama view!



Jeannette > Lancaster > U.S. Glass >
Diamond > Northwood



Northwood > Imperial >
Fenton

> Imperial > Fenton



Fenton



Jeannette "Gold"

Diamond 13"

(all proportionally sized)

Diamond 5"



12" bowl, 4 5/8" base, flared



12" bowl, 4 5/8" base, square



3-footed bowl, slot feet, 10"



3-footed bowl, tab feet, 9"



12" plate, ground base



Narrow & wide shovel-handled servers

Lancaster “Rose Ice & Aztec”

(all proportionally sized)



10" bowl, 45-degree, Rose Ice



12" bowl, flared, Aztec,



10.5" comport, 45-degree, Rose Ice



Mayonnaise, 7.25", Rose Ice



Sherbet & underplate, Aztec



Candleholders, 5" base, Rose Ice



Cheese & Cracker set, Rose Ice



Sweet Pea Vase, 8.75" wide, Rose Ice

Diamond “Gold”

(all proportionally sized)



11" comport, #900 “Adams Rib”



#900 “Adam’s Rib” candleholders



Aquarium & Stand



Comport. 7.5", oval (rib-optic foot)



6" bowl, cupped



7.5" basket (star base)



$\frac{3}{4}$ lb candy jar

Diamond "Gold"

(all proportionally sized)



8" "trumpet" candleholders



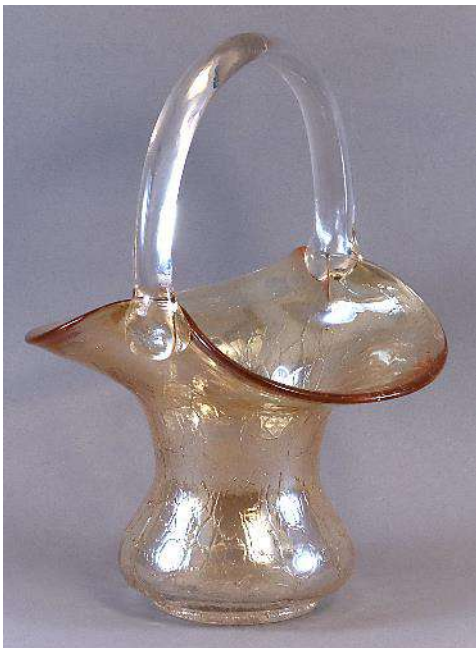
8.75" "spindle" candleholders



7.5" candle-bowl



Sherbet & underplate



Crackle basket



Crackle 3-pinched vase



Car vase in metal stand

Northwood (unkn name)

(all proportionally sized)



#649 bowl, 10"



TOL footed bowl, rolled rim



TOL footed bowl, square cupped



#696 candleholders 10"



TOL comport, server



#719 candleholders, 6.5"



Salt master and individuals

Imperial (Rose Ice)

(all proportionally sized)



Double-scroll candleholders (spiral optic base)



Candle-bowl



"Plain Jane" basket



8" "smooth panels" vase



2-handled vase, rolled rim



"Fenton #500, 4 x 6"

Spiral optic
mayo &
underplate



Imperial (Rose Ice)

(all proportionally sized)



Cheese & cracker, "Chrysanthemum"



#600 sherbet

"Dragonfly"



"Daisy & Balls"



"Forget-me-not & leaves"



"Coreopsis"

Imperial Art Glass (Pearl Ruby & Pearl Green)

(all proportionally sized)



#76 bowl, 9", Pearl Ruby



#56 bowl, 9", Pearl Green



#63 bowl, 6", Pearl Ruby



#60 bowl, 8", Pearl Ruby



#21, hair receiver,
Pearl Ruby



#83 Vase, Pearly Ruby



#74 Vase, Pearl Ruby

Fenton (Grecian Gold)

(all proportionally sized)



Console set: #647 bowl & #349 candleholders, cut ovals



12" #647 bowl, special rolled rim



9" #403 bowl, cupped



14" #604 bowl, low



8" bowl, square

Fenton (Grecian Gold)

(all proportionally sized)



9.75" #231 bowl, low



#232 candleholders



Hi-footed comport, cupped



#500 comport, oval



#260 comport, flared



#9 comport, six-crimp



#923 master nut & salts

Fenton (Grecian Gold)

(all proportionally sized)



#9 candy jar, floral cut



#943 bonbon, silver decoration



#1043 bonbon, silver decoration



Cup & underplate, DO



#500 comport, oval



#9 comport, six-crimp



"Rings" pitcher & tumbler, floral cut



#260 comport, flared

#318 butterball server



Fenton (Grecian Gold)

(all proportionally sized)



Tall pitcher & tumbler, grape cut



Cylinder vase, floral cut



#251 vase, JIP, cut



"Barrel" pitcher & tumbler, grape cut



##314 candleholders, floral cut



#891 vase