



**Show us the most unusual piece(s) of stretch glass
you have in your collection**

“Unusual Stretch Glass” is the topic of our *stretch out* discussion
on

Thursday, January 9, 2025

at 8 pm Eastern, 7 Central, 6 Mountain & 5 Pacific Time.
Come share your most unusual piece or pieces of stretch glass.
You're also welcome to share, rarities, new finds or pieces
you'd like help identifying.

Information is available on our website, stretchglassociety.org
And also available by email: info@stretchglassociety.org



Unusual Stretch Glass

Few whimsies appear to have been made in the vintage era (1914-1930s), but a few rare and unusual pieces are known. Fenton made quite a few whimsies in their late production period. We welcome you to show us your rare and unusual pieces, vintage and recent!



This Fenton #109 bowl has been made into a small spittoon. This spittoon shape was not part of the regular line, but we know of mini and large size pieces. This is likely a “whimsy” made by a worker to sneak home!



Fenton obviously didn't stretch their hobnail, or did they? This small bowl appears to be an experimental, late-production piece.



U.S. Glass #314 comports with flared rims are relatively common, but this is the only crimped one known!



In some cases, the shape makes all the difference, as does color. Any triple-dolphin bowl in the rose bowl shape is highly prized. Having it in ruby stretch makes it even more desirable!

Unknowns

While there are still some unknowns in the American Iridescent Stretch Glass book, more have shown up. Most of these are one-of-a-kind pieces. Do you have a piece not in the book or listed as unknown?



Blue bowl with external panels?



Small topaz dish?



Ruby stretch footed bowl?



Three-footed bowl with petal-panels,
in light cobalt blue?



Small green bowl with tabs?



Odd green smoke shade?

Diamond



#900, 9-inch bowl, green.



#900, 8-inch vase, blue.



Pinched vase, 8-inch, green.



Pitcher, Blue Crackle.



Bowl, 13-inch, rib optic, Blue Crackle.



Covered bonbon, Afterglow.



Creamer whimsy, 3-ring cup, blue.



Match box holder, green.

Fenton



Small box, Celeste
Blue.



Diamond Optic
Cologne,
Celeste Blue.



#600 bowl, whimsey, Ruby.



#640 bowl, low, Flame Stretch.



#?? Bowl, pie-crust crimp, Wistaria.

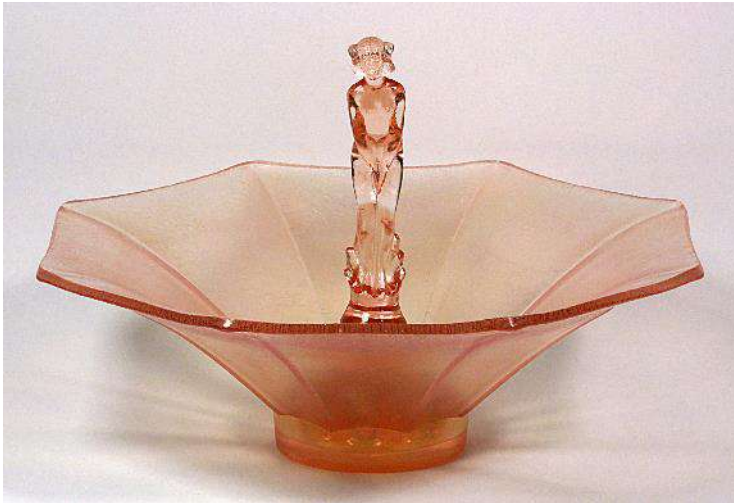


#1668 vase, flared-cupped
top, Amber.



#603-like bowl, scalloped top, Ruby.

Fenton cont'd



#1676 bowl & nymph, Velva Rose.



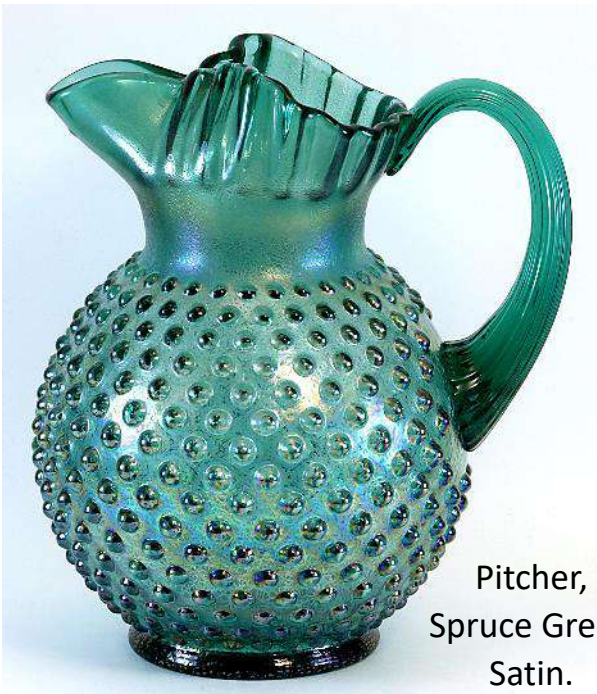
#?? Comport, Tangerine.



#1563 bowl, Tangerine.



Bowl, contemporary,
pink opaque.



Pitcher,
Spruce Green
Satin.



#232 candleholders, Royal Blue.

Central, Jeannette, Lancaster, NW



Bowl, Central, low, cobalt blue.



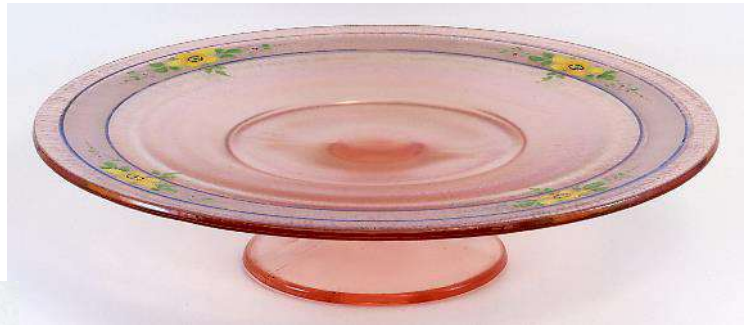
Bowl, Jeannette, ring-footed, dark cobalt blue.



Comport, Jeannette, olive green.



Bowl, footed, Lancaster, Iris Ice.



Cake stand, Lancaster, pink w/flowers.



Comport, poppy intaglio, NW, Topaz.



Bowl, spade-footed, NW, dark purple.

NW cont'd



Comport, purple.



#707 Fern & holder, Blue.



Handled mug, Blue.



Vase, Blue.



#651 candleholder-lamp Blue.



Bowl, square-foot, purple.



#648 bowl, milk glass w/decoration.

Imperial



Imperial paperweight, Pearl Green.



#?? Creamer & Sugar w/oval plate, pink w/decal.



#56 Imperial Art Glass w/Orange Onyx & smoke on milk.



#?? Vase, Orange Onyx.



#?? Imperial Jewels, Pearl Ruby.



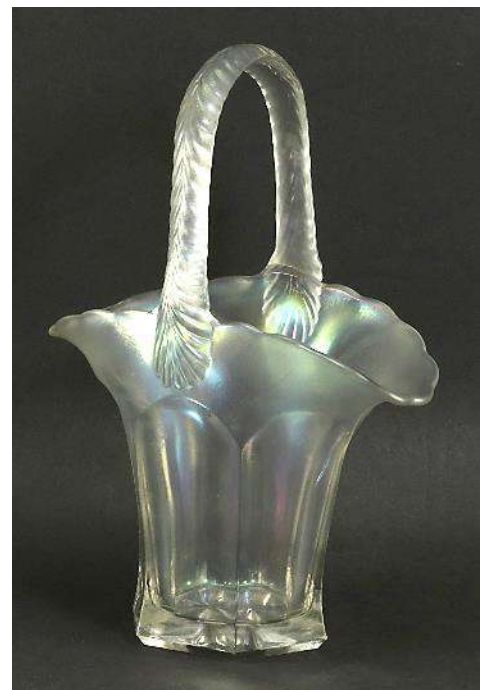
#313 jar, Blue Ice.



#711 jar, Rose Ice.



#313 bowl, marigold on pink.



#?? Basket, Iris Ice.

U. S. Glass



#310 3-footed bowl, crimped, green.



#?? 3-footed bowl, Coral.



#310 footed bowl, openwork, rolled rim, Topaz.



#?? Bowl, rayed, crystal with pink enamel.



#179 hi-footed comport, crystal with blue enamel.



#151 vase, dahlia, Forest Green



#189 candy jar, dark purple.